

# DATA SHEET

**BLV950**

UHF push-pull power transistor

Product specification  
File under Discrete Semiconductors, SC08b

1996 Jan 26

# UHF push-pull power transistor

# BLV950

## FEATURES

- Internal input and output matching for easy matching, high gain and efficiency
- Poly-silicon emitter ballasting resistors for an optimum temperature profile
- Gold metallization ensures excellent reliability.

## APPLICATIONS

- Base station transmitters in the 800 to 960 MHz range.

## PINNING - SOT262A2

PIN	SYMBOL	DESCRIPTION
1	c1	collector 1
2	c2	collector 2
3	b1	base 1
4	b2	base 2
5	e	emitter

## DESCRIPTION

Two NPN silicon planar epitaxial transistors in push-pull configuration, intended for linear common emitter class-AB operation. The transistor is encapsulated in a 4-lead SOT262A2 flange envelope with 2 ceramic caps. The flange provides the common emitter connection for both transistors.

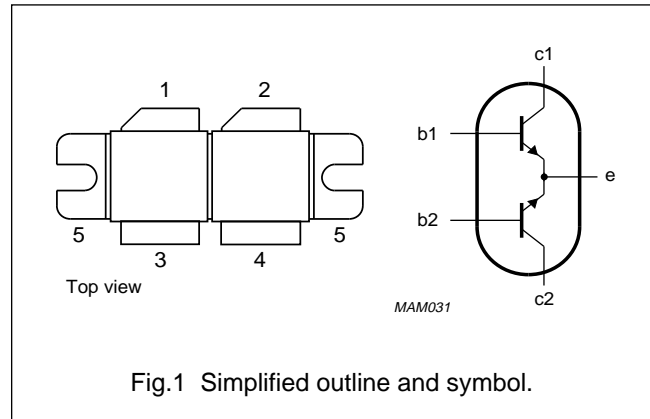


Fig.1 Simplified outline and symbol.

## QUICK REFERENCE DATA

RF performance at  $T_h = 25\text{ }^\circ\text{C}$  in a common emitter push-pull test circuit.

MODE OF OPERATION	f (MHz)	V <sub>CE</sub> (V)	P <sub>L</sub> (W)	G <sub>p</sub> (dB)	η <sub>c</sub> (%)	d <sub>3</sub> (dBc)
CW, class-AB	900	26	150	≥8	≥45	–
	960	26	150	≥7.5	≥45	–
2-tone, class-AB	900	26	150 (PEP)	≥8.5	≥35	≤–30
	960	26	150 (PEP)	≥8	≥35	≤–30

## WARNING

### Product and environmental safety - toxic materials

This product contains beryllium oxide. The product is entirely safe provided that the BeO discs are not damaged. All persons who handle, use or dispose of this product should be aware of its nature and of the necessary safety precautions. After use, dispose of as chemical or special waste according to the regulations applying at the location of the user. It must never be thrown out with the general or domestic waste.

## UHF push-pull power transistor

BLV950

**LIMITING VALUES**

In accordance with the Absolute Maximum Rating System (IEC 134).  
Per transistor section unless otherwise specified.

SYMBOL	PARAMETER	CONDITIONS	MIN.	MAX.	UNIT
$V_{CBO}$	collector-base voltage	open emitter	–	70	V
$V_{CEO}$	collector-emitter voltage	open base	–	30	V
$V_{EBO}$	emitter-base voltage	open collector	–	3	V
$I_C$	collector current (DC)		–	12	A
$I_{C(AV)}$	average collector current		–	12	A
$P_{tot}$	total power dissipation (DC)	$T_{mb} = 25\text{ °C}$ ; note 1	–	340	W
$T_{stg}$	storage temperature		–65	+150	°C
$T_j$	operating junction temperature		–	200	°C

**THERMAL CHARACTERISTICS**

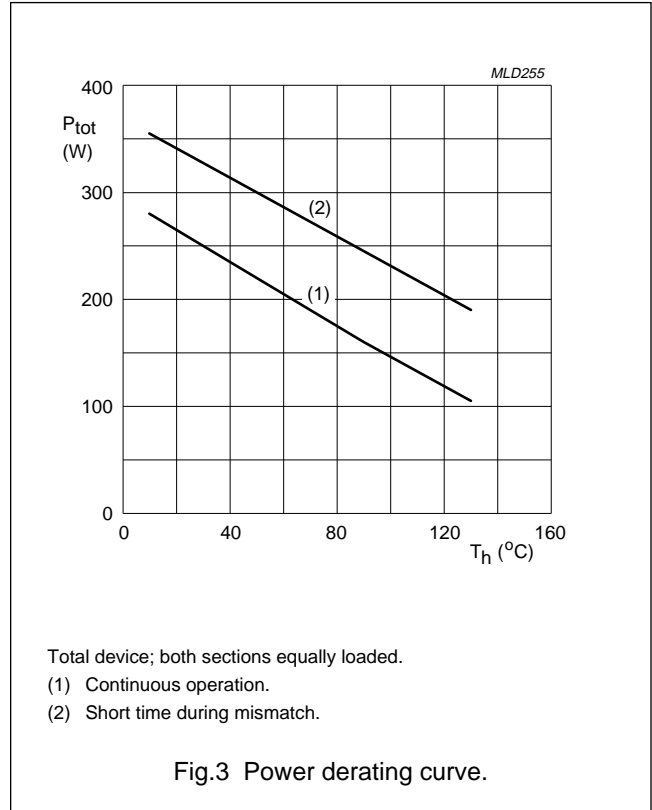
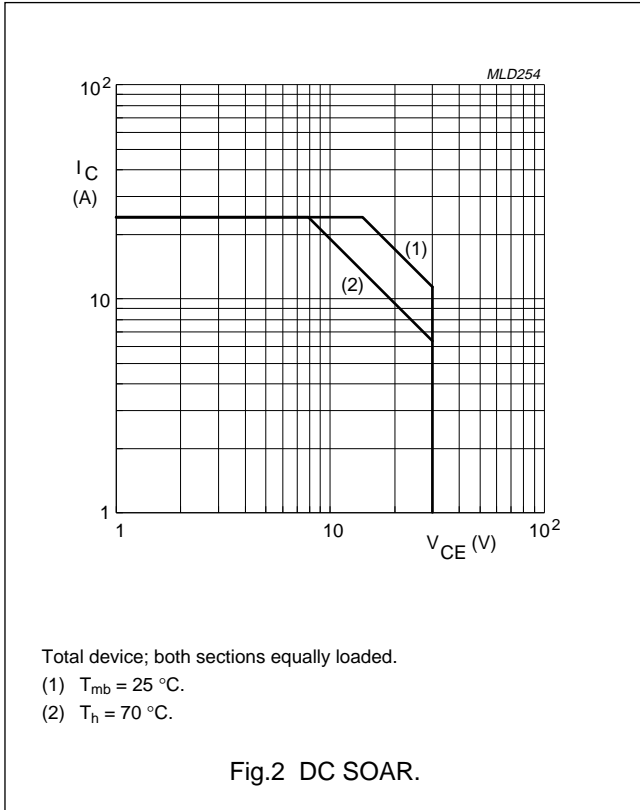
SYMBOL	PARAMETER	CONDITIONS	MAX.	UNIT
$R_{th\ j-mb}$	thermal resistance from junction to mounting base	$P_{tot} = 340\text{ W}$ ; $T_{mb} = 25\text{ °C}$ ; note 1	0.52	K/W
$R_{th\ mb-h}$	thermal resistance from mounting base to heatsink	note 1	0.15	K/W

**Note to “Limiting values” and “Thermal characteristics”**

1. Total device; both sections equally loaded.

UHF push-pull power transistor

BLV950



# UHF push-pull power transistor

BLV950

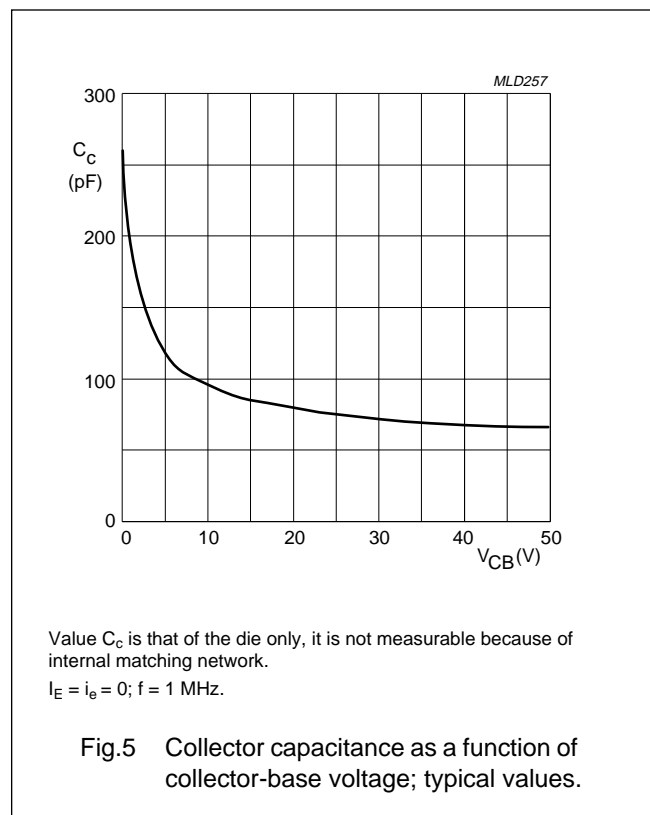
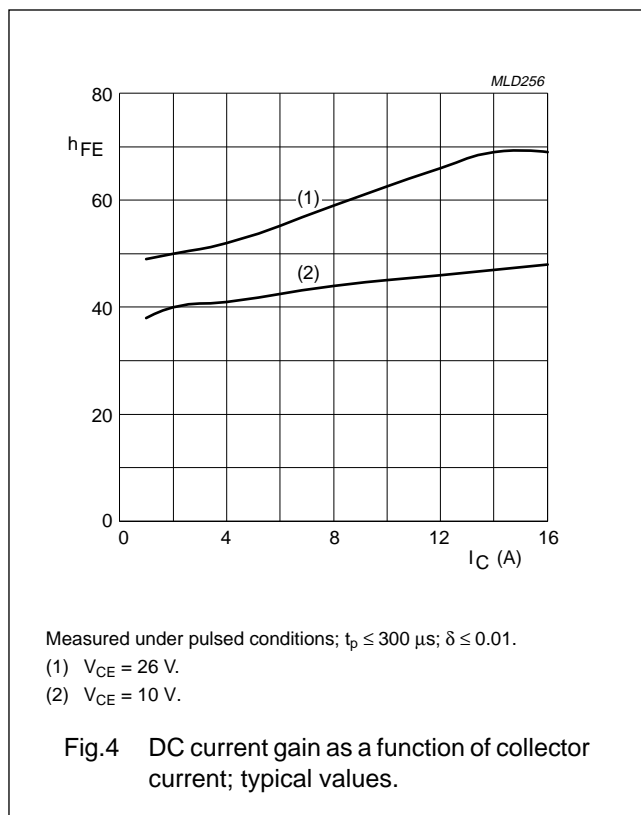
## CHARACTERISTICS

Values apply to either transistor section;  $T_j = 25\text{ }^\circ\text{C}$  unless otherwise specified.

SYMBOL	PARAMETER	CONDITIONS	MIN.	TYP.	MAX.	UNIT
$V_{(BR)CBO}$	collector-base breakdown voltage	open emitter; $I_C = 60\text{ mA}$	70	–	–	V
$V_{(BR)CEO}$	collector-emitter breakdown voltage	open base; $I_C = 150\text{ mA}$	30	–	–	V
$V_{(BR)EBO}$	emitter-base breakdown voltage	open collector; $I_E = 3\text{ mA}$	3	–	–	V
$I_{CES}$	collector leakage current	$V_{BE} = 0$ ; $V_{CE} = 28\text{ V}$	–	–	5	mA
$h_{FE}$	DC current gain	$V_{CE} = 10\text{ V}$ ; $I_C = 4.5\text{ A}$ ; note 1	30	–	120	
$C_c$	collector capacitance	$V_{CB} = 26\text{ V}$ ; $I_E = i_e = 0$ ; $f = 1\text{ MHz}$ ; note 2	–	75	–	pF

### Notes

1. Measured under pulse conditions:  $t_p \leq 300\text{ }\mu\text{s}$ ;  $\delta \leq 0.01$ .
2. Value  $C_c$  is that of the die only, it is not measurable because of internal matching network.



## UHF push-pull power transistor

BLV950

## APPLICATION INFORMATION

RF performance at  $T_h = 25\text{ }^\circ\text{C}$  in a common emitter push-pull test circuit;  $R_{th\text{ mb-h}} = 0.15\text{ K/W}$ .

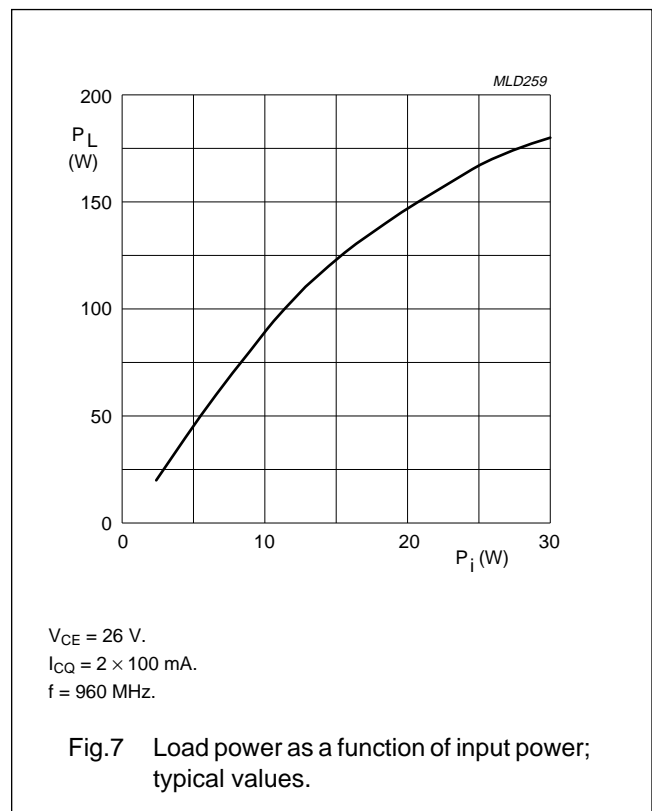
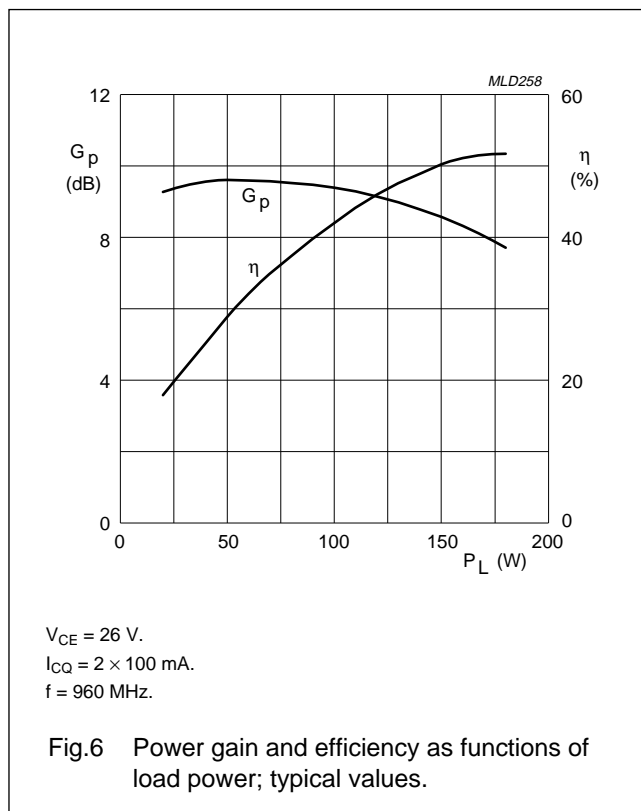
MODE OF OPERATION	f (MHz)	V <sub>CE</sub> (V)	I <sub>CQ</sub> (mA)	P <sub>L</sub> (W)	G <sub>p</sub> (dB)	η <sub>c</sub> (%)	d <sub>3</sub> (dBc)
CW, class-AB	900	26	2 × 100	150	≥8 typ. 9	≥45 typ. 50	–
	960	26	2 × 100	150	≥7.5 typ. 8.5	≥45 typ. 50	–
2-tone, class-AB	note 1	26	2 × 100	150 (PEP)	≥8.5 typ. 9.5	≥35 typ. 40	≤–28 typ. –31
	note 2	26	2 × 100	150 (PEP)	≥8 typ. 9	≥35 typ. 40	≤–30 typ. –33

## Notes

1.  $f_1 = 900.0\text{ MHz}$ ;  $f_2 = 900.1\text{ MHz}$ .
2.  $f_1 = 960.0\text{ MHz}$ ;  $f_2 = 960.1\text{ MHz}$ .

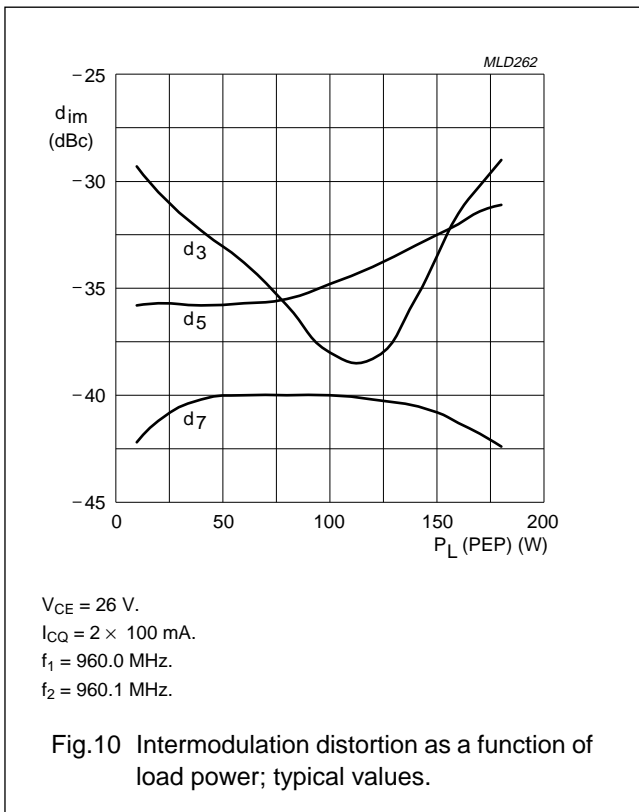
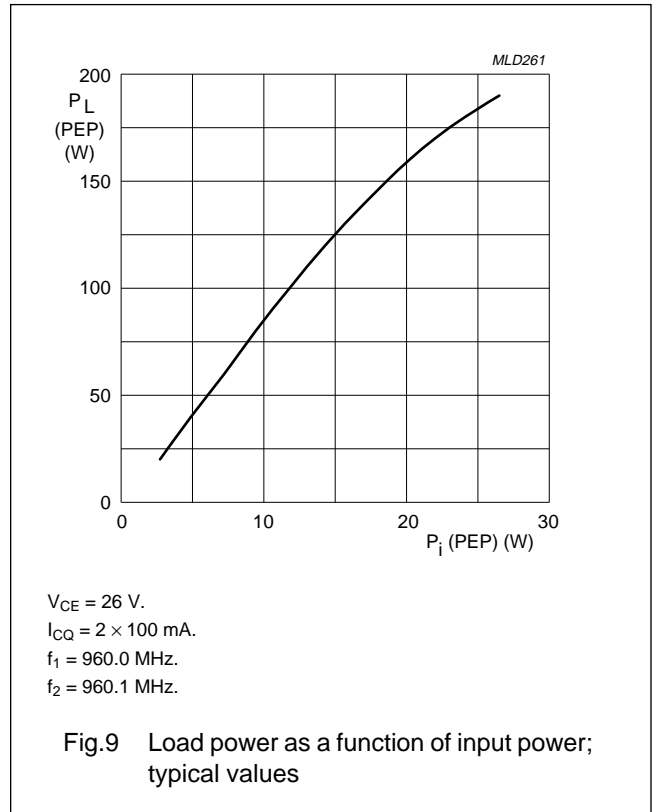
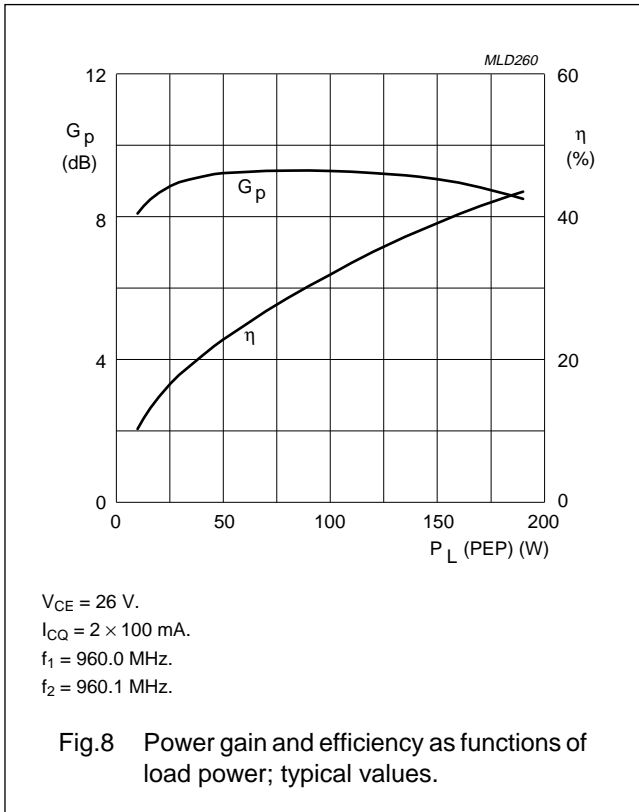
## Ruggedness in class-AB operation

The BLV950 is capable of withstanding a load mismatch corresponding to  $VSWR = 2 : 1$  through all phases under the conditions:  $P_L = 150\text{ W}$ ;  $f = 960\text{ MHz}$ ;  $V_{CE} = 26\text{ V}$ ;  $I_{CQ} = 2 \times 100\text{ mA}$ ;  $T_h = 25\text{ }^\circ\text{C}$ ;  $R_{th\text{ mb-h}} = 0.15\text{ K/W}$  and also a load mismatch of  $VSWR = 5 : 1$  through all phases at  $P_L = 150\text{ W}$  (PEP) and  $f_1 = 960.0\text{ MHz}$  and  $f_2 = 960.1\text{ MHz}$ .



UHF push-pull power transistor

BLV950



UHF push-pull power transistor

BLV950

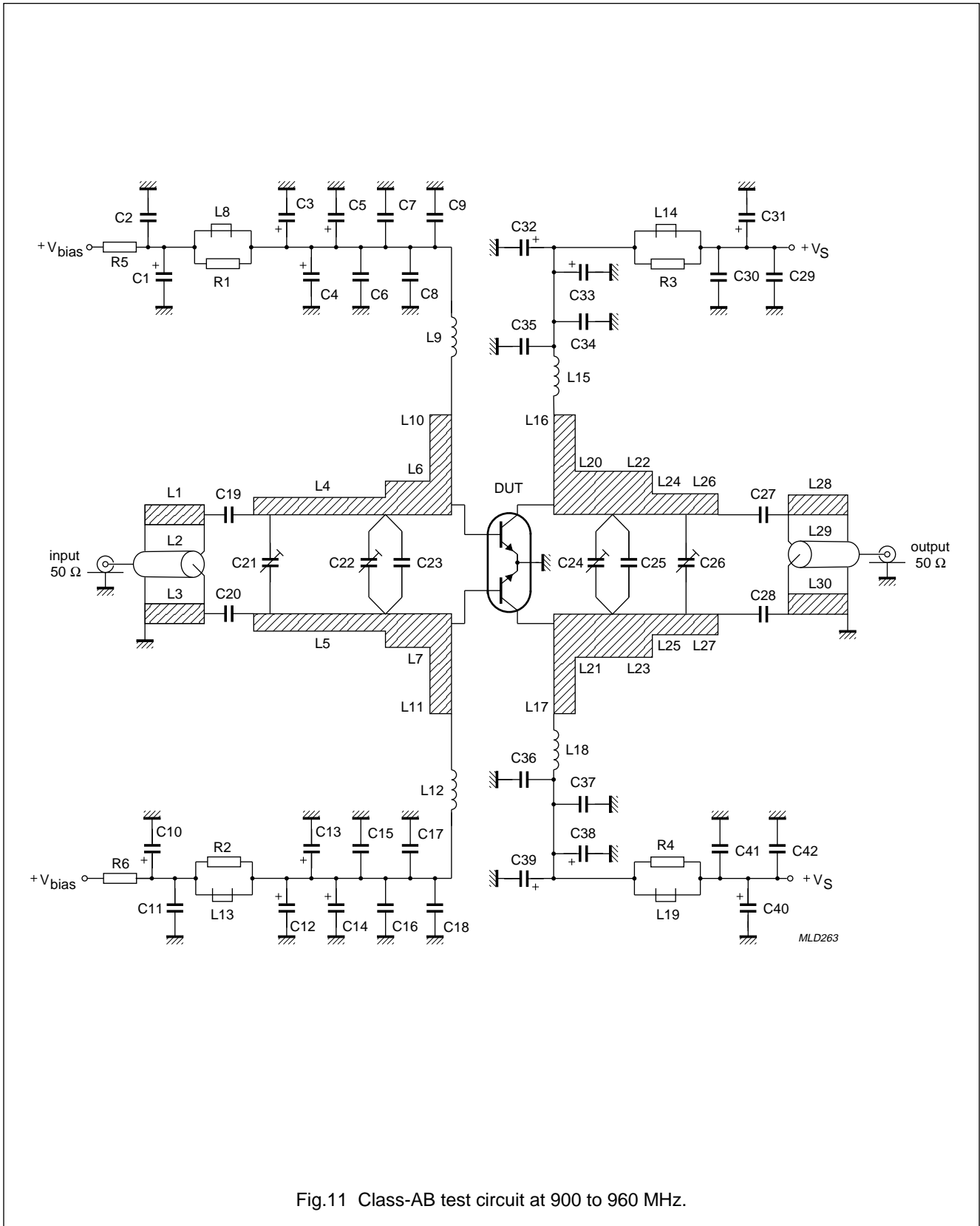


Fig.11 Class-AB test circuit at 900 to 960 MHz.



## UHF push-pull power transistor

BLV950

## List of components (see Figs 11 and 12)

COMPONENT	DESCRIPTION	VALUE	DIMENSIONS	CATALOGUE No.
C1, C10	tantalum capacitor	2.2 $\mu$ F, 35 V		2022 019 00058
C2, C11, C30, C34, C37, C41	multilayer ceramic chip capacitor; note 1	300 pF, 200 V		
C3, C12	electrolytic capacitor	1 $\mu$ F, 63 V		2222 085 78108
C4, C13	electrolytic capacitor	10 $\mu$ F, 16 V		2222 085 75109
C5, C14, C31, C40	tantalum capacitor	1 $\mu$ F, 35 V		2022 019 00056
C6, C15, C29, C42	multilayer ceramic chip capacitor	100 nF, 50 V		2222 581 76641
C7, C16	multilayer ceramic chip capacitor	10 nF, 50 V		2222 581 76627
C8, C17	multilayer ceramic chip capacitor; note 1	330 pF, 200 V		
C9, C18, C19, C20, C35, C36	multilayer ceramic chip capacitor; note 1	39 pF, 500 V		
C23	multilayer ceramic chip capacitor; note 1	2 pF, 500 V		
C25	multilayer ceramic chip capacitor; note 1	3.9 pF, 500 V		
C21, C22	film dielectric trimmer	9 pF		2222 809 09005
C24, C26	film dielectric trimmer	3.5 pF		2222 809 05215
C27, C28	multilayer ceramic chip capacitor; note 1	68 pF, 500 V		
C32, C39	electrolytic capacitor	10 $\mu$ F, 63 V		2222 030 28109
C33, C38	electrolytic capacitor	1 $\mu$ F, 63 V		2222 030 38108
L1, L3	stripline; note 2	35 $\Omega$	length 50.7 mm width 4 mm	
L2	semi-rigid cable; note 3	50 $\Omega$	ext. conductor length 50.7 mm ext. diameter 2.2 mm	
L4, L5	stripline; note 2	35 $\Omega$	length 26.5 mm width 4 mm	
L6, L7	stripline; note 2	20 $\Omega$	length 9.2 mm width 8 mm	
L10, L11, L16, L17	stripline; note 2	7 $\Omega$	length 2.5 mm width 27 mm	
L8, L13, L14, L19	grade 4S2 Ferroxcube chip-bead			4330 030 36300
L9, L12	microchoke	4.7 $\mu$ H		4322 057 04781
L15, L18	4 turns enamelled 1 mm copper wire	100 nH	int. diameter 6 mm close wound	
L20, L21	stripline; note 2	14 $\Omega$	length 6 mm width 12.5 mm	

## UHF push-pull power transistor

BLV950

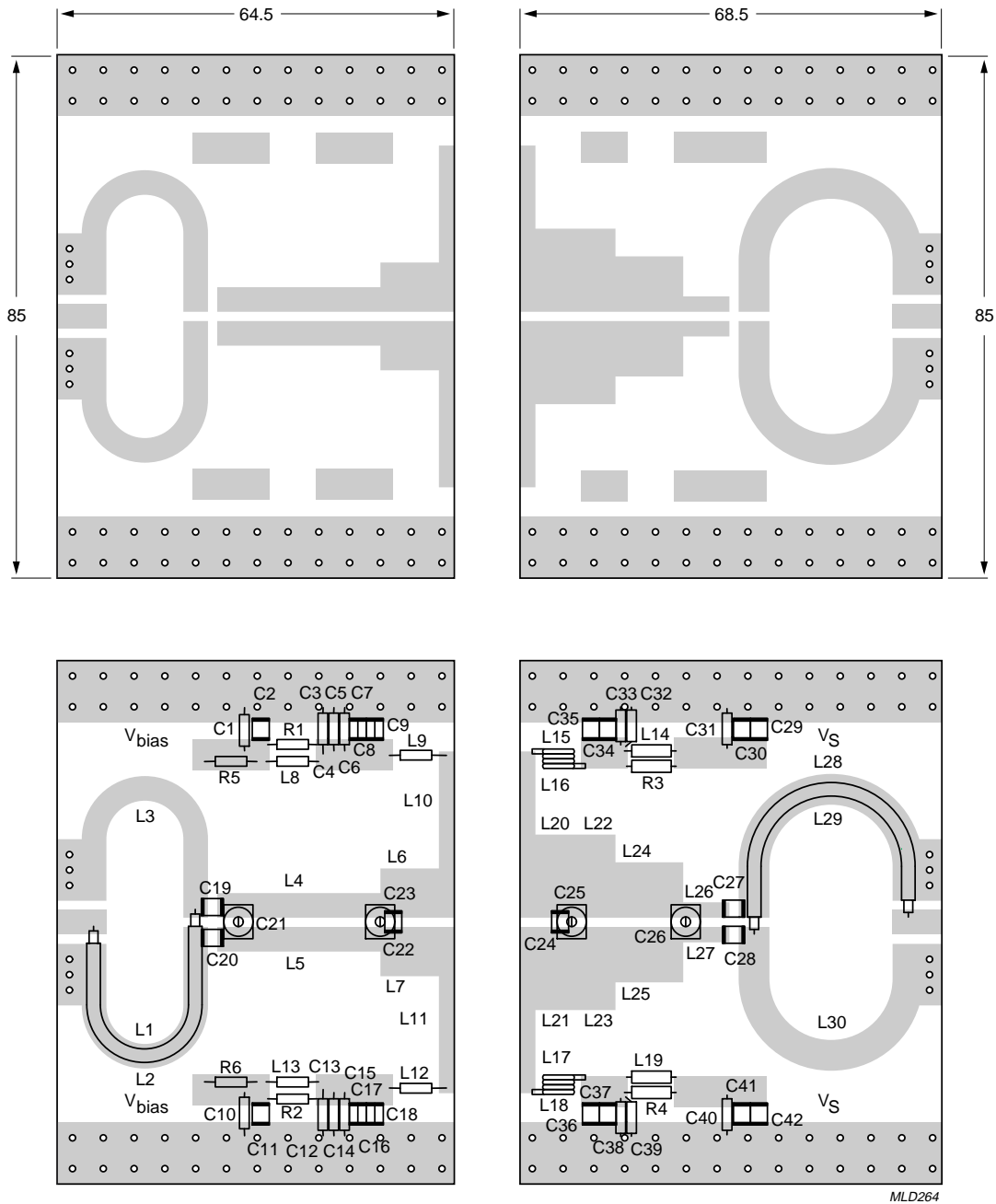
COMPONENT	DESCRIPTION	VALUE	DIMENSIONS	CATALOGUE No.
L22, L23	stripline; note 2	14 $\Omega$	length 7 mm width 12.5 mm	
L24, L25	stripline; note 2	18 $\Omega$	length 11 mm width 9 mm	
L26, L27	stripline; note 2	50 $\Omega$	length 6.5 mm width 2.5 mm	
L28, L30	stripline; note 2	30 $\Omega$	length 49.3 mm width 5 mm	
L29	semi-rigid cable; note 3	50 $\Omega$	ext. conductor length 49.3 mm ext. diameter 3.6 mm	
R5, R6	metal film resistor	0.4 W, 1 $\Omega$		2322 151 71008
R1, R2	metal film resistor	0.4 W, 5.11 $\Omega$		2322 151 75118
R3, R4	metal resistor	1 W, 5.11 $\Omega$		2322 153 75118

**Notes**

- American Technical Ceramics type 100B or capacitor of same quality.
- The striplines are on a double copper-clad printed-circuit board, with microfibre-glass dielectric ( $\epsilon_r = 2.2$ ); thickness  $\frac{1}{32}$ "; thickness of the copper sheet  $2 \times 35 \mu\text{m}$ .
- Semi-rigid cables soldered respectively on striplines L1 and L28.

UHF push-pull power transistor

BLV950



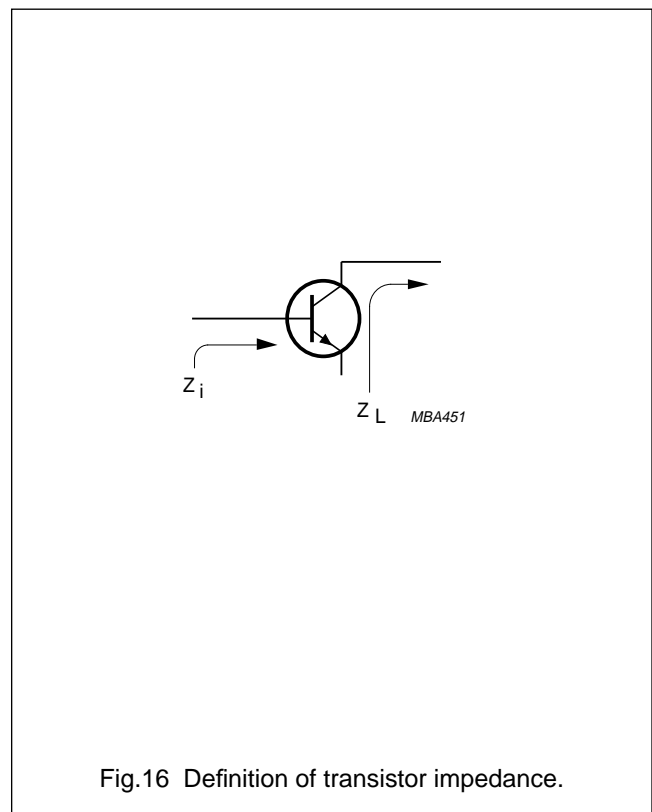
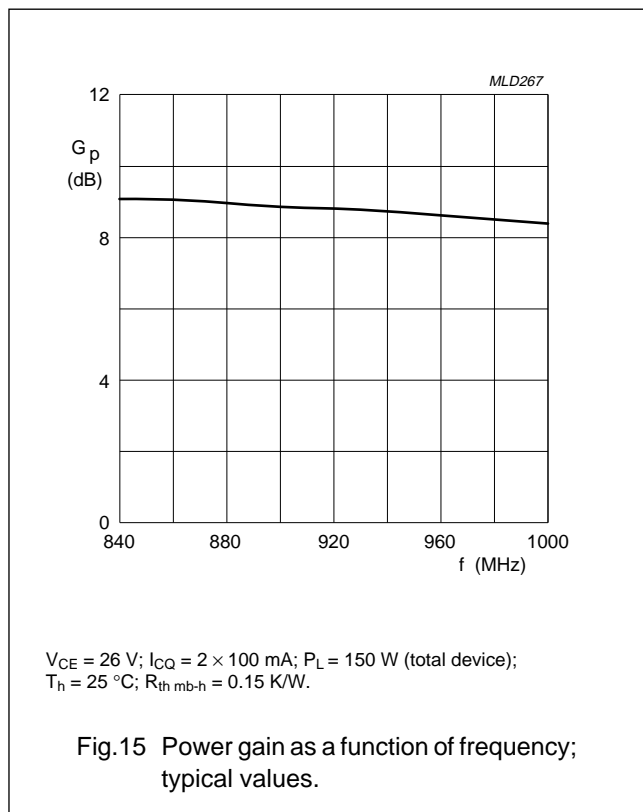
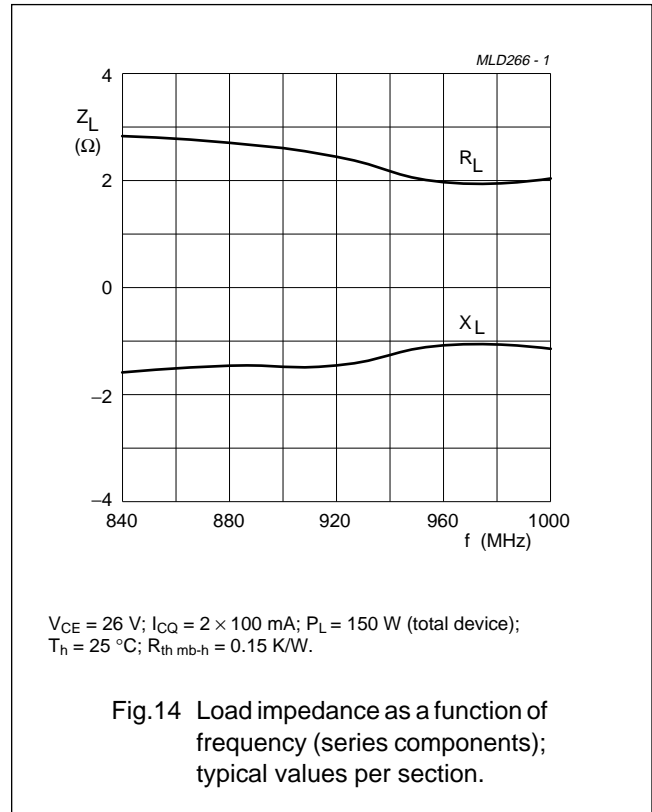
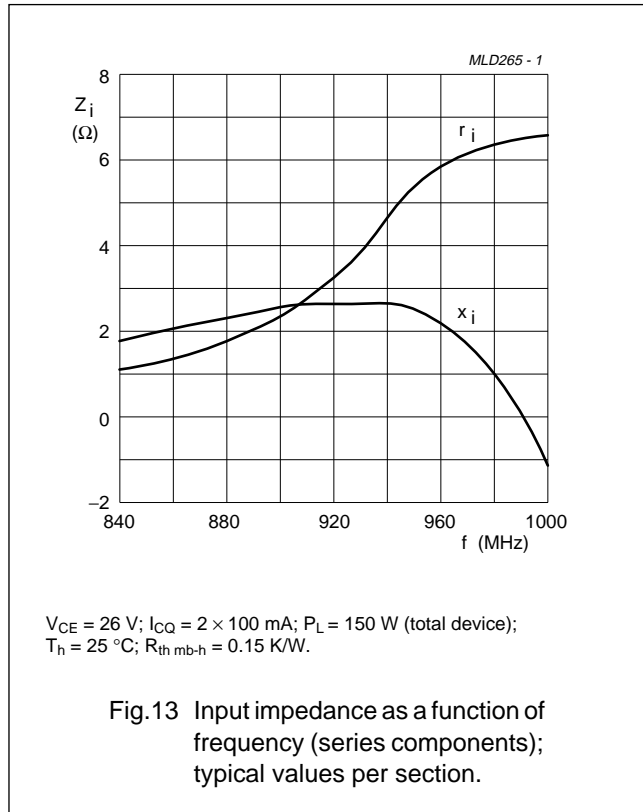
Dimensions in mm.

The components are situated on one side of the copper-clad PTFE microfibre-glass board, the other side is unetched and serves as a ground plane. Earth connections from the component side to the ground plane are made by through metallization.

Fig.12 Component layout and printed-circuit board for 900 to 960 MHz class-AB test circuit.

UHF push-pull power transistor

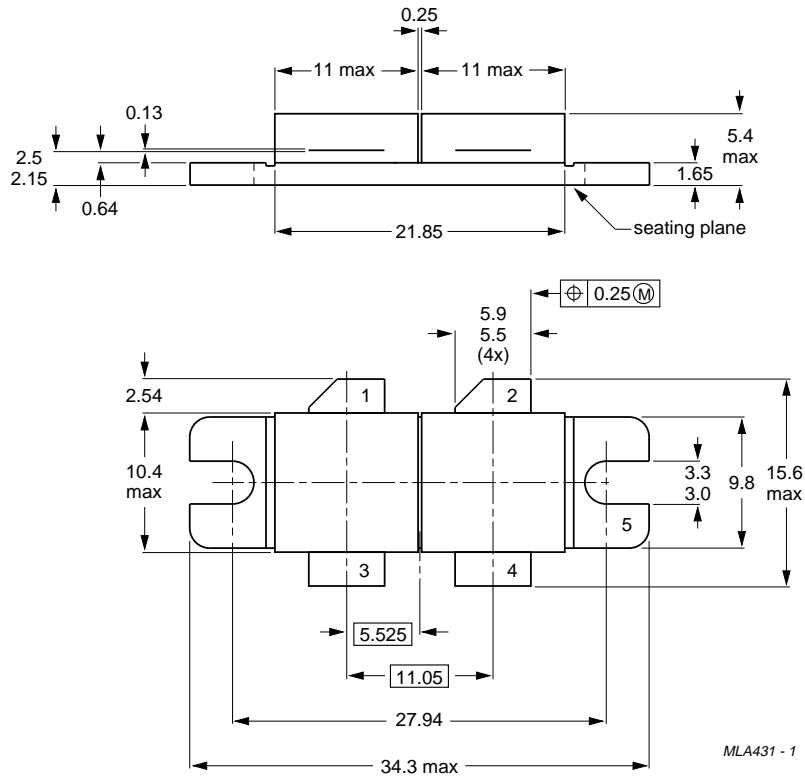
BLV950



UHF push-pull power transistor

BLV950

PACKAGE OUTLINE



Dimensions in mm.  
 Torque on screw: min. 0.6 Nm; max. 0.75 Nm.  
 Recommended screw: cheese-head 4-40 UNC/2A.  
 Heatsink compound must be applied sparingly and evenly distributed.

Fig.17 SOT262A2.

## UHF push-pull power transistor

BLV950

**DEFINITIONS**

<b>Data Sheet Status</b>	
Objective specification	This data sheet contains target or goal specifications for product development.
Preliminary specification	This data sheet contains preliminary data; supplementary data may be published later.
Product specification	This data sheet contains final product specifications.
<b>Limiting values</b>	
Limiting values given are in accordance with the Absolute Maximum Rating System (IEC 134). Stress above one or more of the limiting values may cause permanent damage to the device. These are stress ratings only and operation of the device at these or at any other conditions above those given in the Characteristics sections of the specification is not implied. Exposure to limiting values for extended periods may affect device reliability.	
<b>Application information</b>	
Where application information is given, it is advisory and does not form part of the specification.	

**LIFE SUPPORT APPLICATIONS**

These products are not designed for use in life support appliances, devices, or systems where malfunction of these products can reasonably be expected to result in personal injury. Philips customers using or selling these products for use in such applications do so at their own risk and agree to fully indemnify Philips for any damages resulting from such improper use or sale.

---

UHF push-pull power transistor

BLV950

---

**NOTES**

## Philips Semiconductors – a worldwide company

**Argentina:** IEROD, Av. Juramento 1992 - 14.b, (1428)  
BUENOS AIRES, Tel. (541)786 7633, Fax. (541)786 9367

**Australia:** 34 Waterloo Road, NORTH RYDE, NSW 2113,  
Tel. (02)805 4455, Fax. (02)805 4466

**Austria:** Triester Str. 64, A-1101 WIEN, P.O. Box 213,  
Tel. (01)60 101-1236, Fax. (01)60 101-1211

**Belgium:** Postbus 90050, 5600 PB EINDHOVEN, The Netherlands,  
Tel. (31)40-2783749, Fax. (31)40-2788399

**Brazil:** Rua do Rocio 220 - 5<sup>th</sup> floor, Suite 51,  
CEP: 04552-903-SÃO PAULO-SP, Brazil,  
P.O. Box 7383 (01064-970),  
Tel. (011)821-2333, Fax. (011)829-1849

**Canada:** PHILIPS SEMICONDUCTORS/COMPONENTS:  
Tel. (800) 234-7381, Fax. (708) 296-8556

**Chile:** Av. Santa Maria 0760, SANTIAGO,  
Tel. (02)773 816, Fax. (02)777 6730

**China/Hong Kong:** 501 Hong Kong Industrial Technology Centre,  
72 Tat Chee Avenue, Kowloon Tong, HONG KONG,  
Tel. (852)2319 7888, Fax. (852)2319 7700

**Colombia:** IPRELENZO LTDA, Carrera 21 No. 56-17,  
77621 BOGOTA, Tel. (571)249 7624/(571)217 4609,  
Fax. (571)217 4549

**Denmark:** Prags Boulevard 80, PB 1919, DK-2300  
COPENHAGEN S, Tel. (45)32 88 26 36, Fax. (45)31 57 19 49

**Finland:** Sinikalliontie 3, FIN-02630 ESPOO,  
Tel. (358)0-615 800, Fax. (358)0-61580 920

**France:** 4 Rue du Port-aux-Vins, BP317,  
92156 SURESNES Cedex,  
Tel. (01)4099 6161, Fax. (01)4099 6427

**Germany:** P.O. Box 10 51 40, 20035 HAMBURG,  
Tel. (040)23 53 60, Fax. (040)23 53 63 00

**Greece:** No. 15, 25th March Street, GR 17778 TAVROS,  
Tel. (01)4894 339/4894 911, Fax. (01)4814 240

**India:** Philips INDIA Ltd, Shivsagar Estate, A Block,  
Dr. Annie Besant Rd. Worli, Bombay 400 018  
Tel. (022)4938 541, Fax. (022)4938 722

**Indonesia:** Philips House, Jalan H.R. Rasuna Said Kav. 3-4,  
P.O. Box 4252, JAKARTA 12950,  
Tel. (021)5201 122, Fax. (021)5205 189

**Ireland:** Newstead, Clonskeagh, DUBLIN 14,  
Tel. (01)7640 000, Fax. (01)7640 200

**Italy:** PHILIPS SEMICONDUCTORS S.r.l.,  
Piazza IV Novembre 3, 20124 MILANO,  
Tel. (0039)2 6752 2531, Fax. (0039)2 6752 2557

**Japan:** Philips Bldg 13-37, Kohnan2-chome, Minato-ku, TOKYO 108,  
Tel. (03)3740 5130, Fax. (03)3740 5077

**Korea:** Philips House, 260-199 Itaewon-dong,  
Yongsan-ku, SEOUL, Tel. (02)709-1412, Fax. (02)709-1415

**Malaysia:** No. 76 Jalan Universiti, 46200 PETALING JAYA,  
SELANGOR, Tel. (03)750 5214, Fax. (03)757 4880

**Mexico:** 5900 Gateway East, Suite 200, EL PASO, TX 79905,  
Tel. 9-5(800)234-7381, Fax. (708)296-8556

**Netherlands:** Postbus 90050, 5600 PB EINDHOVEN, Bldg. VB,  
Tel. (040)2783749, Fax. (040)2788399

**New Zealand:** 2 Wagener Place, C.P.O. Box 1041, AUCKLAND,  
Tel. (09)849-4160, Fax. (09)849-7811

**Norway:** Box 1, Manglerud 0612, OSLO,  
Tel. (022)74 8000, Fax. (022)74 8341

**Pakistan:** Philips Electrical Industries of Pakistan Ltd.,  
Exchange Bldg. ST-2/A, Block 9, KDA Scheme 5, Clifton,  
KARACHI 75600, Tel. (021)587 4641-49,  
Fax. (021)577035/5874546

**Philippines:** PHILIPS SEMICONDUCTORS PHILIPPINES Inc.,  
106 Valero St. Salcedo Village, P.O. Box 2108 MCC, MAKATI,  
Metro MANILA, Tel. (63) 2 816 6380, Fax. (63) 2 817 3474

**Portugal:** PHILIPS PORTUGUESA, S.A.,  
Rua dr. António Loureiro Borges 5, Arquiparque - Miraflores,  
Apartado 300, 2795 LINDA-A-VELHA,  
Tel. (01)4163160/4163333, Fax. (01)4163174/4163366

**Singapore:** Lorong 1, Toa Payoh, SINGAPORE 1231,  
Tel. (65)350 2000, Fax. (65)251 6500

**South Africa:** S.A. PHILIPS Pty Ltd.,  
195-215 Main Road Martindale, 2092 JOHANNESBURG,  
P.O. Box 7430, Johannesburg 2000,  
Tel. (011)470-5911, Fax. (011)470-5494

**Spain:** Balmes 22, 08007 BARCELONA,  
Tel. (03)301 6312, Fax. (03)301 42 43

**Sweden:** Kottbygatan 7, Akalla. S-164 85 STOCKHOLM,  
Tel. (08)-632 2000, Fax. (08)-632 2745

**Switzerland:** Allmendstrasse 140, CH-8027 ZÜRICH,  
Tel. (01)488 2211, Fax. (01)481 77 30

**Taiwan:** PHILIPS TAIWAN Ltd., 23-30F, 66, Chung Hsiao West  
Road, Sec. 1. Taipeh, Taiwan ROC, P.O. Box 22978,  
TAIPEI 100, Tel. (886) 2 382 4443, Fax. (886) 2 382 4444

**Thailand:** PHILIPS ELECTRONICS (THAILAND) Ltd.,  
209/2 Sanpavuth-Bangna Road Prakanong,  
Bangkok 10260, THAILAND,  
Tel. (66) 2 745-4090, Fax. (66) 2 398-0793

**Turkey:** Talatpasa Cad. No. 5, 80640 GÜLTEPE/ISTANBUL,  
Tel. (0212)279 27 70, Fax. (0212)282 67 07

**Ukraine:** Philips UKRAINE, 2A Akademika Koroleva str., Office 165,  
252148 KIEV, Tel. 380-44-4760297, Fax. 380-44-4766991

**United Kingdom:** Philips Semiconductors LTD.,  
276 Bath Road, Hayes, MIDDLESEX UB3 5BX,  
Tel. (0181)730-5000, Fax. (0181)754-8421

**United States:** 811 East Arques Avenue, SUNNYVALE,  
CA 94088-3409, Tel. (800)234-7381, Fax. (708)296-8556

**Uruguay:** Coronel Mora 433, MONTEVIDEO,  
Tel. (02)70-4044, Fax. (02)92 0601

**Internet:** <http://www.semiconductors.philips.com/ps/>

**For all other countries apply to:** Philips Semiconductors,  
International Marketing and Sales, Building BE-p,  
P.O. Box 218, 5600 MD EINDHOVEN, The Netherlands,  
Telex 35000 phtcnl, Fax. +31-40-2724825

SCDS47 © Philips Electronics N.V. 1996

All rights are reserved. Reproduction in whole or in part is prohibited without the prior written consent of the copyright owner.

The information presented in this document does not form part of any quotation or contract, is believed to be accurate and reliable and may be changed without notice. No liability will be accepted by the publisher for any consequence of its use. Publication thereof does not convey nor imply any license under patent- or other industrial or intellectual property rights.

Printed in The Netherlands

127061/1100/02/pp16  
Document order number:

Date of release: 1996 Jan 26  
9397 750 00593

*Let's make things better.*